



# GRINDSTONE GAZETTE

ISSUE 145 - DEC. 2010

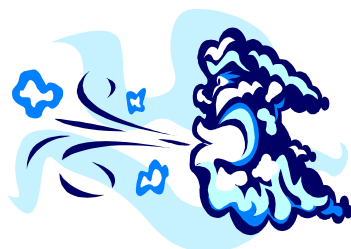
Emergency Medical Services	Page 2	Storm Photos	Page 11
Three New Board Members	Page 3	Grindstone Trails Committee	Page 12
Advertisers	Page 5-8	What's Bugging You?	Page 13
Website Analytics	Page 9	Curse of the Labrador Duck	Page 14
Little Grindstone Harbour Authority	Page 10	Grindstone Gourmet	Page 16

## From your board.....

Proud Member of MACO, C.M.C.P.P. & Lake Wpg. Research Consortium

Well I hope everyone has had a chance to get out and enjoy this amazing fall weather, at least winter should be shorter by one month. But we did have a couple of nasty storms rage through the park with high water and winds causing all kinds of damage, especially for those right on the lake.

While a lot of people have closed up for the summer I would suggest you die hard cottagers take a look at your neighbours lots and see if they have any damage or trees down that pose a concern. If you don't know how to contact them please let me know the cottage number, street and damage and I will get a hold of them.



Another concern this past fall involves a medical emergency at the Harbour that required a call to 911 and the dispatch of emergency vehicles. The time to respond and problems for them to locate the Harbour has brought to light that we are really on our own out here when problems occur and we are forced to deal with the situation until help arrives.

The board is presently looking into signage that will clearly indicate where and how far various

features are located in the park such as the Harbour and Commodities Area. We are also looking into signage showing the direction back to the main road, especially within Blacks Point, so both visitors and service vehicles can find their way out.

But really it is up to us to at least have a basic knowledge of first aid and CPR, have a first aid kit and let everyone at your cottage know where it is located.

**If an emergency does occur and 911 is called it has been suggested by EMS staff that someone waits at the main road with their car pointed back into the development so they can follow them to the cottage or location where aid is required. We are looking into other solutions and will keep everyone up to date as things proceed via the Gazette and the website. (See pg 2 for more information)**

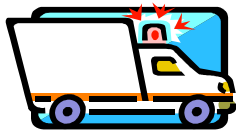
If you haven't seen the pictures of the Harbour from that storm in late October all I can say is it was not a place you wanted to be. (See page 11.) The water was so high it covered the electrical panel, docks were flipped over and at one spot the waves were throwing those limestone boulders over the breakwater on to the parking lot. A special thanks to all those out there that day that offered and gave assistance of some ..... continued on the next page →

continued from page 1 .....

kind, thanks to Mike for removing several boats from the water before the worst weather hit. Another thanks to Gil, his wife and other members on the trails committee that have cleared the development trails before and no doubt after that storm.

volumes of snow for the next couple years. Now these are the same guys that said that we would have a hot dry summer but there is always the chance they might get one prediction right. With that being said stay warm & safe and to you snowmobilers, have a great season.

As for winter, Environment Canada has predicted a colder than usual weather pattern with larger - Bob Ralke



## 911 Emergency

## EMERGENCY MEDICAL SERVICE AT GRINDSTONE

The recent death of a commercial fisherman highlights some weakness regarding the Emergency Medical Service (EMS) within the Grindstone cottager community. It has generated a lot of discussions on the topic of emergency response. The GCOA has initiated some immediate actions such as providing maps of the area to the local health authority (Interlake Regional Health Authority) and to the RCMP in Arborg and Gimli (thanks to Larry Verhaeghe).

After the last GCOA meeting, I accepted to play a leadership role to improve the current state. Theresa Borsa has also volunteered to be part of the team. With the wisdom of seasoned board members and a bunch of volunteers we will be able to define and implement an emergency response adapted to our specific needs.

While we are currently developing an action plan for the medium and long term, we can begin to immediately affect positive change. Larry's maps are one example. Another one is the creation and the distribution of a list of trained First Aiders willing to be called in case of emergency.

**If you are a certified First Aider and are willing to have your name and contact number published within the community in case of emergency, please email the team at: [taborsa@mts.net](mailto:taborsa@mts.net)**

We will also be planning First Aid and CPR courses to help us improve our ability to provide emergency response on site. The time and dates will be announced as soon as possible.

Lastly, we will need volunteers. **If you are interested in joining the committee to help with planning, please email us**  
**At: [taborsa@mts.net](mailto:taborsa@mts.net)**

I am looking forward to working with the community on this worthwhile project. Please watch the website for more information as it becomes available: [www.grindstonepark.ca](http://www.grindstonepark.ca)

Jean-Guy

## Website Update & Upgrade:



We've made some great enhancements to the website. Response time is quicker than ever. If you haven't been on lately you will be pleasantly surprised. [www.grindstonepark.ca](http://www.grindstonepark.ca)

View the pictures at Photo Gallery, just roll over the heading of Cottage Life 2010 (to see the pictures of the damage at the harbour) or click below.

<http://www.grindstonepark.ca/cms/photo-gallery/cottage-life-2010/>

Under Links, go to the Gimli Harbour Webcam. We watched with interest the 5 foot high rise in water levels slowly recede. We visit the link frequently for a look at the weather/winds and even snow conditions north of us.

<http://www.grindstonepark.ca/cms/links/>

Visit the website often.....the website is for you, your comments, opinions and information are welcome & appreciated.

## **3 NEW BOARD MEMBERS!**

Several months ago we asked Grindstoners to consider being on the board. We were very lucky to get 3 very nice, relatively new cottagers, to join.

Jean-Guy Pageau, has already agreed to head a committee on Emergency Medical Services for us at Grindstone. Theresa Borsa, new board member as well, will be assisting him with this committee. Our 3rd new recruit is Mike Stainton, he has just attended his first board meeting and is still putting names to faces.

*Welcome and thanks to all three of you.*



## **Your Board consists of:**

Or write to GCOA c/o Box 4408, Stonewall, Man. R0C 2Z0 [www.grindstonepark.ca](http://www.grindstonepark.ca)

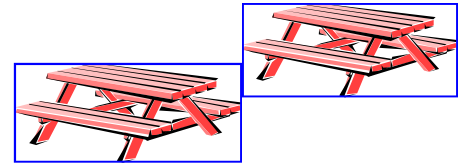
Bob Ralke	Chair	771-4403	<a href="mailto:bralke@live.com">bralke@live.com</a>
Jason Zulyniak	Vice Chair	864-2555	<a href="mailto:jzulyniak@mts.net">jzulyniak@mts.net</a>
Linda Grayston	Secretary	694-3103	<a href="mailto:lgrayston@shaw.ca">lgrayston@shaw.ca</a>
Mo Tipples	SouL Chair	257-7230 378-5147	<a href="mailto:saveourlake@shaw.ca">saveourlake@shaw.ca</a>
Howard Thiesen	Treasurer	467-2414 378-2550	<a href="mailto:howardt@highspeedcrow.ca">howardt@highspeedcrow.ca</a>
Larry Verhaeghe	Membership	222-2862 378-5354	<a href="mailto:larryverhaeghe@3web.net">larryverhaeghe@3web.net</a>
Bob Johnston	Member	661-6198 378-2902	<a href="mailto:8916bj@mts.net">8916bj@mts.net</a>
Craig Goldstein	G'days	330-2896 378-5536	<a href="mailto:cagoldstein@mts.net">cagoldstein@mts.net</a>
Frank Wright	Member	791-5391 378-2588	<a href="mailto:wright67@gmail.com">wright67@gmail.com</a>
Lynn Sinclair	Gazette	668-3262 378-5402	<a href="mailto:grindstone.gazette@gmail.com">grindstone.gazette@gmail.com</a>
Jean-Guy Pageau	Member	474-1688	<a href="mailto:bevpageau@shaw.ca">bevpageau@shaw.ca</a>
Theresa Borsa	Member	269-2698 378-5347	<a href="mailto:taborsa@mts.net">taborsa@mts.net</a>
Mike Stainton	Member	353-2277	<a href="mailto:staintonm@gmail.com">staintonm@gmail.com</a>

## GRINDSTONE DAYS 2011

Four years ago, our family joined the Grindstone Family and immediately became raving fans of 'GRINDSTONE DAYS!' I am excited to take on the role of Grindstone Days Coordinator and will do my very best to keep the weekend as much fun as it has been over the past 30 years. I want to thank Larry Verhaeghe for everything he has done and for setting the bar so high. Larry's hard work and dedication has culminated into one of the best weekend celebrations in Manitoba!

As we look forward to the future of Grindstone Days I am asking everyone to consider donating some volunteer time to the weekend. It might be volunteering at an event, collecting silent auction prizes, or being a safety liaison for a day. **WE NEED YOUR HELP!** Larry and his team of volunteers have taught us that we need involvement, we need dedication and we need many hands to make this weekend so great. If you are able to help out with any part of the weekend, please send an email to me and I will be in touch shortly thereafter.

Thank you in advance for your participation!  
Craig Goldstein, Grindstone Days Coordinator  
cagoldstein@mymts.net



## GRINDSTONE DRAINAGE PROBLEMS

After the 2 wet summers that we have had, some cottagers had experienced problems with water drainage on their lots.

This issue was brought up at our last AGM and our Parks Office received some calls. So, Bob Bomberak, acting District Parks Supervisor, invited the G.C.O.A. to submit specific problems to him for consideration. Our September Gazette and our website asked cottagers to send in written drainage problems so that we could forward them to him.

In October, the Board sent Bob twelve letters of concern on drainage issues. Hopefully Bob will be able to get back to the effected cottagers, before next summer, with possible solutions.



Report—December 2010.

While the Cottage summer season is over with a hum-dinger of a storm to end the season, we trust that damage to your lots was not too great. Keith and I drove up the SW lakeshore area of the Lake from Matlock to Gimli and witnessed the damage done. The water stripped the grass turf off of lakeshore lots and exposed the underlying rocks. The cottages were very close to the beach even before the storm it seemed and it reminds us that the best protection for lake shore lots is the natural shoreline material. This was a storm of great force and nothing that Hydro does, or any constructed manmade structure, could have withstood its fury. In my youth, I lived on the shore of the English Channel and witnessed many destructive exhibitions of sheer power by the sea.

The trip down our Lake's SW shoreline also made us realize how very fortunate we are at Grindstone with our seclusion, isolation and natural surrounding! Keep up the good work and leave Nature alone to look after itself.....she knows best.

- Mo Tipples & Amanda Le Rougetel  
SOUL committee

**CO-OP Riverton Cooperative Assn Ltd**

39 Riverton Ave  
378-2251 or 378-2324

Looking for quick meal ideas? We've got...

- Salads
- Veggie trays
- Fruit trays
- Fresh wraps
- Fresh sandwiches
- Rotisserie chicken
- One cup desserts
- Quesadillas
- Party dips
- Heat n Eat chicken pieces

**Store Hours**

Monday — Thursday:  
8am to 7pm  
Friday:  
8am to 8pm  
Saturday:  
8am to 6pm  
Sunday:  
12 pm to 5pm  
Closed Holidays

Supplying all your Hardware needs; from toasters to paint, from cutlery to power tools.  
**IF WE DON'T HAVE IT, YOU DON'T NEED IT!**



Watch for our new Scratch 'n' Save days, the first Tuesday of each month.

**Riverton Co-op Gas Bar**  
378-2942



Open 7 Days a Week!  
Mon.-Sat. 7am-9 pm  
Sunday 8am-9 pm

**Convenience Store/Car Wash**

Coffee, Slushies & Water  
Upgraded Car Wash  
Laundromat  
Propane



Everything from oil to Sandwiches

**OASIS PLUMBING INC.**

**ROGER ABUDA**

BOX 14  
Arborg, MB  
R0C 0A0

Complete plumbing services  
Specialized water treatment systems & filters  
Free Estimates – 24 Hour Service

Phone: 204-376-2712  
Fax: 204-376-2301  
Res: 204-376-5378

**Arborg Home**



Homes, Garages, Decks  
Garden Sheds  
Shingles etc.

Delivery Service

We can help you with your Project!

Hwy 7 & 68, Arborg  
Office: (204) 376-3090  
Fax: (204) 376-3088  
email: ray@arborghhbc.com



**Flooring and Blinds Centre**

Vinyl & Carpet  
Hardwoods & Laminate  
Ceramic Tile  
Shade-o-matic Blinds

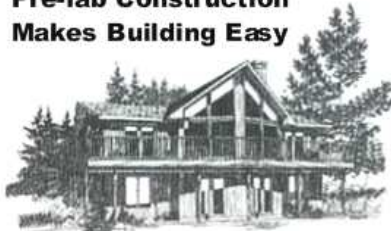
Choose from stock or samples, we'll install it.  
Free estimates

**Home Owners helping homeowners**

**J.P. GULAY SALES**

Pre-fab Construction  
Makes Building Easy

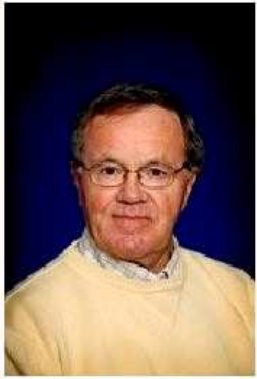
Patrick Gulay  
Home Building Consultant



Arborg, MB.  
Ph: (204) 376-5426  
Fax: (204) 376-5239

Email: jpgulay@lakenet.ca





**Ken Stephanson, Realtor**  
 Bus: (204) 642-8501  
 Toll Free: 1-888-642-8501  
 Fax: (204) 642-8457  
 Email: gksteph@mts.net  
 56 Centre Street  
 Gimli, MB, R0C 1B0  
 www.interlake.mb.ca

**Grindstone Cottages Sold:**

- \* 49 Wild Rose Lane
- \* 34 Mountain Maple
- \* 41 Arrowwood Lane
- \* 10 Mountain Maple
- \* 7 Black Currant Place
- \* 6 Little Grindstone Rd
- \* 1 Birch Crescent
- \* 80 Blacks Point Road
- \* 48 Blacks Point Road

**Ken Stephanson**  
 Realtor  
 gksteph@mts.net



**"It's always a good day  
 in cottage country"**

*Yesterday's Meals on Wheels*  
**J.J's**  
**Septic Service** Holding Tank Full?  
 Call J.J.'s  
 Septic Service  
 jjseptic@rainyday.ca  
 Box 279  
 Arnes, Manitoba ROC OCO  
 Phone: (204)-642-9554



*Speltz Ancient Grains Kamut®*  
  
**Ph. 1 866 378.2887**  
**Ph. 378. 2887**  
 OPEN MONDAY -  
 SATURDAY  
**Pizza Night 5:00 - 9:00**  
 June 5 to August 28th  
 Friday and Saturday  
 Check [www.integrityfoods.ca](http://www.integrityfoods.ca) for menu  
 10th Anniversary celebrations in 2010

**iBuilderMart.com**  
 Home/Cottage Design & Construction  
 Decks  
 Complete Home Renovations  
 Complete Design/Engineering Services  
**Toll Free: 1 (866) 270-2397**

Larry - larry@ibuildermart.com (Riverton)  
 Ryan - ryansvenson@ibuildermart.com (Winnipeg)  
 Rej - rej@ibuildermart.com (Winnipeg)  
 Steven - stevenulrich@ibuildermart.com  
 (head of design team)

**Toll Free: 1 (866) 270-2397**

Proud members of Manitoba Chambers of Commerce

**Dream Click Build**

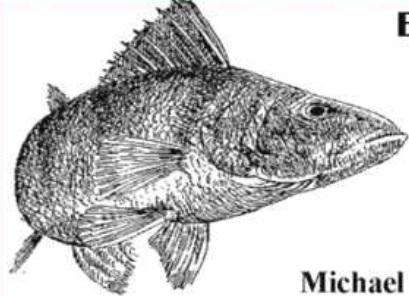
**DGH ENGINEERING LTD.**  
**Call: 1-877-334-8846**

Architectural Design, Building Engineering & Blueprints  
 Building Inspections • Renovations & Repairs  
 Energy Conservation & Mechanical Systems  
[www.dghengineering.com](http://www.dghengineering.com)

Building Engineering

**Eastman Fisheries**

**Fresh and Frozen Pickerel Fillets**



**Michael W. Eastman**  
 29 Spruce Drive - P.O.Box 91  
 Ph. 378-5621 - Cell. 641- 0932  
 Grindstone, MB R0C 2R0

# KEY COMMUNICATIONS

HIGH SPEED SATELLITE INTERNET

- Supports VOIP (telephone service)
- Remotely monitor live video of your cabin from home
- No telephone line required
- Quick professional installation

ALWAYS ON ALWAYS FAST!

Key Communications Ltd. Email: info@keyradioshop.com  
Ph: 204-237-1000 Toll Free: 1-877-237-1001



## Doug's Plumbing & Backhoe Service

Holding tanks, well hook-up  
driveways, lot clearing  
gravel, topsoil, trenching  
complete plumbing



Doug Johnson, Riverton, MB  
279-2511 Cell 641-4402

## DAVE'S SEPTIC SERVICE

Port-A-Potty

Phone: 204-376-5309

Cell: 204-642-2797

Toll Free: 1-866-376-5309

Box 369 Arborg, Mb. R0C 0A0



CHRIS NEUFELD  
Realtor

Bus: (204) 642-8501

Cell: (204) 641-1727

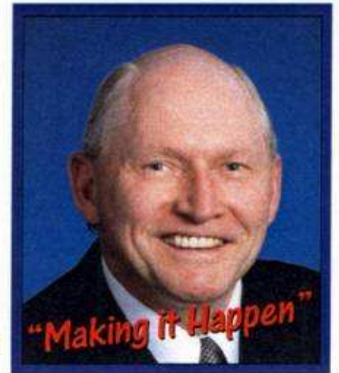
Toll Free: 1-888-642-8501

Fax: (204) 642-8457

Email: chrisneufeld@mts.net



56 Centre Street  
Gimli, MB R0C 1B0  
www.interlake.mb.ca



# ST. BONIFACE Landscaping

AND PAVINGSTONE  
22 YEARS IN BUSINESS

CALL US FOR YOUR GRINDSTONE LANDSCAPING REQUIREMENTS

Call Mike Decuyper at 781-2962  
Or Email: stbonland@skyweb.ca

- Pavingstone walks and patios
- Limestone and Topsoil supply & levelling
- Driveways
- Equipment rentals
- Brush clearing
- General cleanup
- Drainage issues



## Riverton Agri'Auto Repair Inc.

Raymond Johnson, 26 Riverton Avenue  
Ph: 204-378-2855 Email: rayvick@mts.net



Hours: Mon - Sat. 6:00 a.m. - 10:00 p.m.

Sundays & Holidays - 7:30 a.m. - 8:00 p.m.

Full service, Propane Exchange, Gas/Diesel, Repairs of all makes/models, Brakes, Tire Service, MPIC accredited for Glass Repairs, Purolator agent, Greyhound Bus Depot, Lotto

**Ray's 24 Hour Deck Towing** call: 204-378-5245 (CAA, MPIC, DAA, GM/Ford/Chrysler Roadside, Canadian Tire



# The Cottager

www.thecottager.com

GCOA members save 50% off newsstand price

**2 year subscription for only \$20.00**

It's Easy . . .

Phone toll free: 1-866-404-4844 or

Email: magazine@thecottager.com

**Lot Clearing  
Backhoe Service  
Crushed Limestone & Topsoil  
Snow Clearing**

**Wilbert Thorarinson**  
Box 381 Riverton, Mb. R0C 2R0  
Ph/Fax 378-2469 Cell: 642-2299



**PERIMETER DRILLING LTD.**

*Licensed Water Well Specialists*

Water Wells  
Heat Pumps

Septic Fields  
Pump Installations

**Ernest M. Futros**

*Free Consultations*

RR 2 Box 12A  
Winnipeg, MB R3C 2E6

Ph: (204) 632-6426  
Fax: (204) 632-9200

**RIVERTON & DISTRICT CHAMBER  
OF COMMERCE  
WELCOMES YOU TO RIVERTON**

**MARK YOUR CALENDARS FOR THESE  
EXCITING UPCOMING EVENTS:**

- Riverton Elks Ice Fishing Derby (all ages) - Feb. 20<sup>th</sup>
- Community Yard Sale – Saturday, May 1<sup>st</sup>
- Riverton Elks Kids Fishing Derby – July 1<sup>st</sup>
- Riverton Reunion Home Coming 2010 Weekend -Fireworks,  
Parade, Activities, Ethnic Food, Steak BBQ - July 9–11
- Dinner & Dance with Fine Country Folk & Friends - July 10
- Community Xmas Dinner & Dance – Dec. 4

For more information visit our website:

[www.rivertoncanada.com](http://www.rivertoncanada.com)



Thank you Grindstone and Area.  
Riverton appreciates your business!!

*ELECTRICAL  
CONTRACTOR*

*DESIGN  
SERVICES*



*RICK EYOLFSON C.E.T.*

PH: (204) 378-2948  
FAX: (204) 378-5450  
EMAIL: rickselectric@mts.net

P.O. Box 239  
E-78 Main St.  
Riverton, MB  
R0C 2R0



**The Grindstone  
General Store**

Beer, Liquor, Snacks, Movies,  
Groceries, Saturday Newspapers, Cabin Coolers,  
Washer and Dryer, Book Exchange, Crafts, Permits,  
Fishing Licenses, Novelties and Ice Cream Cones

Sandy and Don Bridges 378-2999

**Come visit the Little Log Store with More!**



**RIVERTON BUILDING  
SUPPLIES INC.**

89 Main Street,  
Riverton, MB

**CHRIS EYOLFSON**  
Manager

Tel: (204) 378-5288 Cell: (204) 642-2980  
Toll Free: 1-866-378-5288 Fax: (204) 378-2832  
Email: chris.rbs@mts.net

SKID STEER / SNOW CLEARING SERVICE

**Interlake  
Water Supply Co. Ltd.**

MEMBER OF MANITOBA WATER WELL ASSOCIATION



DOMESTIC - INDUSTRIAL  
WATER WELLS - SOIL TESTING  
PUMP SALES & SERVICE  
SEPTIC FIELDS & PLUMBING

**GUY ROHNE**

BOX 40 INWOOD, MANITOBA R0C 1P0  
PHONE: (204) 278-3328 CELL: (204) 886-7092

## Google Analytics – Huh?

Google Analytics is a free service offered by Google that generates detailed statistics about the visitors to a website. So what does Google have to say about grindstonepark.ca?

Between Nov. 2009 and Nov. 2010 we had 4,804 visitors to our website, approximately 13.13 visits per day. Each visit lasted about 3 minutes 26 seconds. The average visitor looked at 3.95 pages on their visit. Website visitors were up 55.92% from 2008!

Where are our top visitors coming from?

- 4,149 visitors were from Wpg
- 112 visitors were from Arborg
- 31 visitors were from Ottawa
- 30 visitors were from Seattle
- 29 visitors were from Toronto

The most visitors at one time?

- 71 visitors on Sunday April 18th, 2010
- 68 visitors on Monday April 19th, 2010
- 59 visitors on Saturday April 17th, 2010
- 54 visitors on Tuesday April 20th, 2010
- 51 visitors on Thursday June 10th, 2010
- 48 visitors on Tuesday Nov. 24th, 2009
- 42 visitors on Wed. March 24th, 2010

How are visitors finding grindstonepark.ca?

1. 67.07% through direct traffic (i.e. Typing in grindstonepark.ca)
2. 25.90% through search engines (i.e. Google)
3. 5.08% through referring site (i.e. we are linked in to another site)

The top search words to find our website?

1. Grindstone Gazette
2. Grindstone Park
3. Grindstone Cottage
4. Grindstone Manitoba
5. Grindstone Cottagers Association

The top viewed pages on our website?

1. Home-4,422 views
2. Forum-3,097 views
3. Forum/General-671 views

Continued.....

4. Forum/News-552 views
5. Local Businesses-409 views
6. Forum/For Sale-388 views
7. Photo Gallery-348 views
8. Gazette-307 views
9. Links-287 views

By: Wendy Finch  
Website Co-ordinator  
Email: wfinch@mymts.net



People often call those little demons that bite our ankles at the beach black flies or sand flies.



Nope!



See page 12 for details!

## Have a Safe Winter at Grindstone!

Drive safely on the roads to and from the cottage. Remember to take up at least 3 extra days of food and medicines as the main road is not a priority to be plowed after heavy snowfalls or storms.

As you know the store will be open all winter and will carry all basic needs including groceries (except for milk & ice), liquor and GAS.



The winter hours for the store are:

Friday 4:30 pm - 8 pm  
Sat. 10:00 am - 1 pm, 4 pm - 6 pm  
Sun. 11:00 am - 1 pm

Safe & happy snowmobiling! Please snap a few pictures of your winter escapades and send them to the website.



## LITTLE GRINDSTONE HARBOUR

Report—Nov. 2010

A lot has happened in and around the harbour over the past two months. The fall commercial fishing season has come and gone & ended abruptly and early because of the “weather bomb” unleashed over Lake Winnipeg during the last week of fishing season. Those of you who have seen the havoc this storm played on the harbour can appreciate this statement. Water coming through the breakwater by the road, down the hill from the parking lot, eroded part of the road base. The winds of the storm surged the water over the breakwater and floated many of the docks off the chain moorings on the steel posts. As a result, many docks were damaged and the entire south side of the harbour has been removed for the winter freeze up, (new docks will be floated in the spring). The harbour shed was even moved partially off its foundation by wind and water. Small Craft Harbours have been supportive in paying for the clean-up of the docks and the debris left behind from the storm. Thank you to Carl Niemi and Wilbert Thorarinson for their support of this effort.

Earlier in the month of October a human tragedy befell the commercial fishermen working in the harbour. Timothy Hurdell, a 43 year old fisher from Riverton, suffered a fatal heart attack while pulling up nets out on the water. Mike Eastman answered the distress call on his marine radio and summoned an ambulance and paramedics to the scene while relaying instructions from 911 to



individuals on the scene. Unfortunately by the time they arrived, Timmy was gone. Several fishermen (Terrance, Michael, Rusty, and Cory) assisted Timmy in his final moments and we would like to acknowledge them for their courage and compassion in a difficult time. Though it did not influence the outcome, the Emergency Responders had some difficulty in finding the harbour due to poor signage of the harbour’s whereabouts. This issue has been addressed with the GCOA and Parks.

The construction project of an additional breakwater continues to move through the bureaucratic channels and potentially could be out to tender by the end of November. The work needs to be completed by March 31, 2011 to qualify under the stimulus funding from the Government of Canada. By the time the harbour is up and running in the spring it will look quite different than before!



The Board would like to thank everyone for their support and cooperation over the past season. Special thanks go out to Riverton Co-op for supporting the Little Grindstone Harbour Fish Fry for the last two years. It is very much appreciated.

Harbour Authority:

Mike Eastman 204-378-5621  
 Michael Buhr 204-785-8341  
 Rob Ediger 204-757-4579



**WAS YOUR GAZETTE  
MAILED TO YOU?**

If you have recently joined the electronic world please consider receiving the gazette via email. Just let me know at: [grindstone.gazette@gmail.com](mailto:grindstone.gazette@gmail.com)



GRINDSTONE TRAILS  
COMMITTEE (GTC)

- update December 2010

The committee members have been kept busy with meetings and clearing the fallen trees on the trails. This was an unusually wet summer with strong winds. Trail users should be careful as there are many large trees along the trails that are not very healthy and may fall when there are strong winds. Fallen trees from the trails have been cleared on three different occasions this summer. Volunteers also cleared the four large trees that were blocking the Sno Man Trail on Mile Ten near the shed.

All trails at Grindstone are maintained by volunteers. For the most part these volunteers are snowmobilers and ATVer's. It takes a lot of hard work, time and expense to keep the trails in useable condition. This includes bridge repairs, clearing of fallen trees and grooming. These trails are used by all people in the park. When the trails are newly groomed and have not had a chance to harden they can be easily damaged. Please respect the hard work of the volunteers & all users and do not go on the trails until they have had a chance to set and freeze.

Parks delivered four loads of gravel and the GTC paid for the spreading. More work is required but little can be done because the trails are too wet.

It is our goal to fill all the low spots and to add more gravel. This will be done in the spring.

The warm up shelter has been painted.

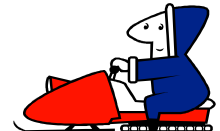
Two GTC members meet regularly with the Inter-lake Snow Trackers. They have been informed that Sno Man is considering supporting grooming a trail across Washow Bay. This trail would connect to the Riverton/Arborg trail. We probably will be responsible to mark it.

Parks approved building a snowmobile trail from Black's Point to the shed on Mile Ten. The GTC is responsible to mark and develop it. The proposed multi-use trail on the west side of the store and along the ponds was not approved. The committee feels that this was a reasonable proposal and that this trail would be easier to develop and maintain. It would also be a very interesting and scenic trail for all activities. The committee is appealing this decision to the Minister of Conservation.

The committee would like to thank all the supporters for the projects undertaken.

Parks involvement with trail maintenance is minimal and it is the volunteers that do most of the work. The grooming of trails is done by volunteers as well as tree removal, bridge repair and other maintenance.

- Joe Mudry



## WHAT'S BUGGING YOU?

- by Gabe Kraljevic, Black's Point

For those of you who remember your grade 12 biology (and who doesn't) insects have 6 legs and 2 pair of wings. However, there is a group of insects that only has one pair of wings and this group is called "The Flies". Well, in entomology they are called the order Diptera (di = two; ptera = wings), and while many insects are called flies (butterflies, fishflies, dragonflies, etc.) the 'true flies' include house flies, horse flies, deer flies, hover flies and many more.\* Flies actually do have two pair of 'wings' but the back pair have evolved into tiny, club-shaped stubs called halteres. The flies include some of the most hateful and medically important insects known to humankind: mosquitoes and black flies top that list.

I have found that very few southern Manitobans know what a black fly really is. People often call those little demons that bite our ankles at the beach black flies or sand flies. Nope. While those are true flies they are more properly called stable flies.

In the picture you'll see a tiny, hump-backed insect on the tip of my finger. THAT'S a black fly. So, what do they do? You ever get itchy behind your ears or on your neck and find out that you're bleeding from a bunch of tiny, circular holes? That's what black flies do. (Some prefer your ankles or wrists.) Unlike mosquitoes, which stick a hypodermic mouth through your skin, black flies actually chew a hole in your skin and use it as a bowl. So why don't you feel it when a black fly bites? Well, these little nasties have evolved anaesthetic chemicals in their saliva! There are also blood-thinners that make it easier for them to slurp up the blood as it oozes into the hole. This is also why you'll often find a little trickle after the fly leaves. Mosquito bites hurt so much because their saliva has blood-thinners but no anaesthetic. All these chemicals in insect saliva are proteins and your body's immune system reacts, causing pain, itching, swelling and hives. Kids and your family visiting from BC get REALLY BIG



Note how small the real black fly is!

reactions because it takes time for your immune system to react with less 'anger'.

The reason that southern Manitobans don't seem to know a lot about black flies is because these critters start their life clinging to rocks in clear, moving water. Not much of that happening on the prairies. But, head into the north, Whiteshell or into Ontario and you're in black fly country! No, prairie folk live where we have water sitting in ditches, ponds and puddles...perfect for mosquitoes.

Gabe

- For those grammar buffs: you might have noticed that the word "fly" is separate in the name of a true fly while the others have the word "fly" incorporated into one word.

"And the black flies, the little black flies.  
Always the black fly no matter where you go..."

- The Black Fly Song, Wade Hemsworth

**Membership Form Grindstone Cottage Owners Association**  
 Cheques payable to/mail to: G.C.O.A. Box 4408, Stonewall, Mb., R0C 2Z0  
 Thanks in advance for your support!

Name: \_\_\_\_\_

Email: \_\_\_\_\_

Home Address (for information only—as the gazette will be emailed to you)  
 \_\_\_\_\_

City & Province: \_\_\_\_\_ Postal Code: \_\_\_\_\_

Telephone #: \_\_\_\_\_

Lake Street address: \_\_\_\_\_

2010 dues (\$10) \_\_\_\_\_

2011 dues (\$10) \_\_\_\_\_

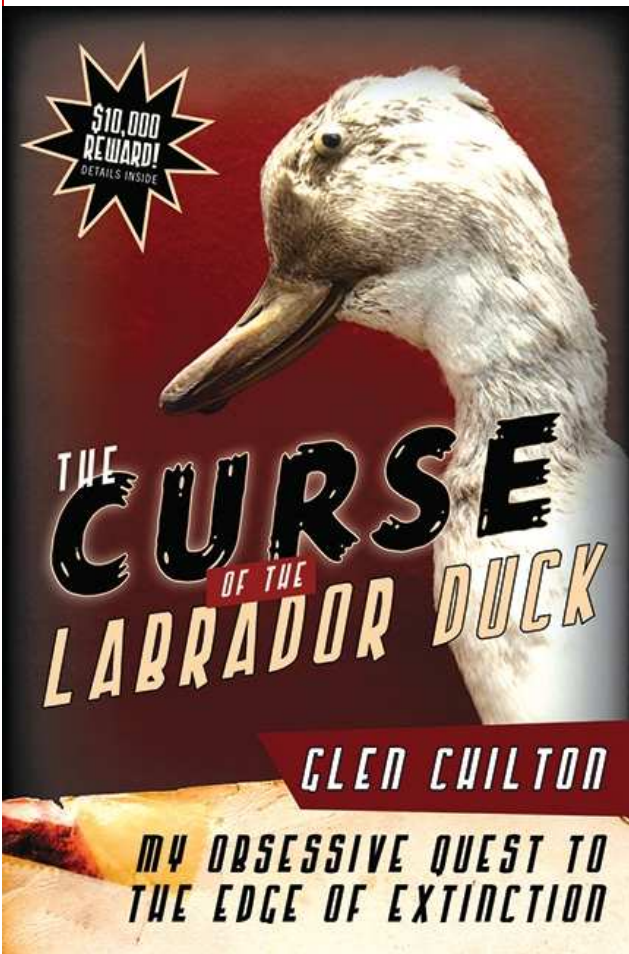
Grindstone Days donation \_\_\_\_\_

Special projects fund \_\_\_\_\_

Save Our Lake Group \_\_\_\_\_  
 (check applicable line above)

***Your Association needs your support!***

Please complete this application and forward with your cheque.  
 The Gazette will be pleased to advise your paid-up-date by return email.



**Ever heard of a Labrador Duck?**  
 How much trouble can an extinct stuffed bird get you into?

Dr. Glen Chilton (who studied at the Univ. of Manitoba) has written a great book on his obsessive quest to see 55 stuffed Labrador Ducks. This book is sort of a mystery, sort of a nature book and sort of a travel book. It didn't take long before we were thoroughly hooked.

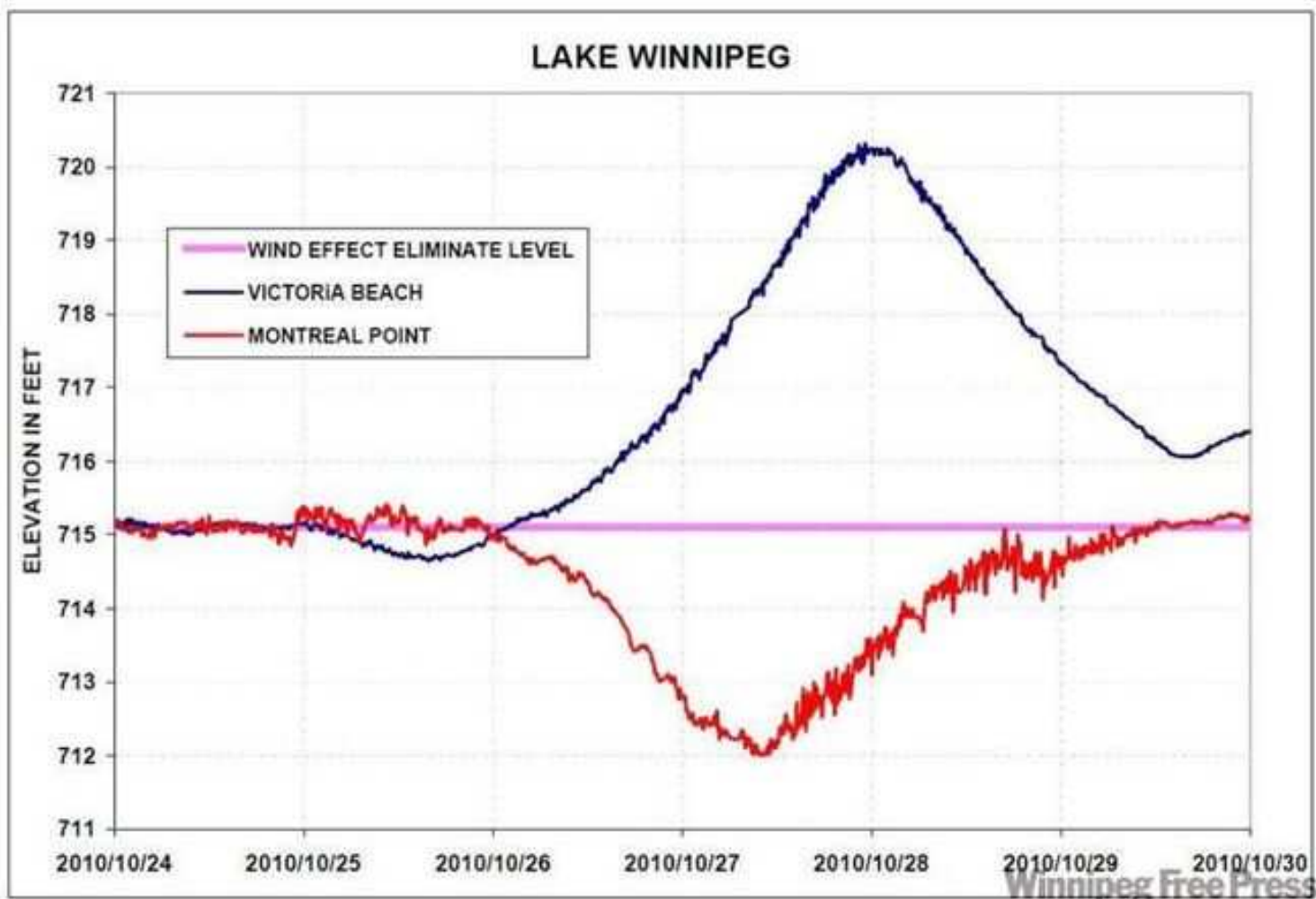
The adventure begins when he decides to visit every known Labrador Duck (egg and bone) in existence around the world. This bird once lived mostly in eastern North America and has been extinct for around a 125 years. Now most are found in forgotten musty basement rooms in museums and a few in private collections worldwide. Dr. Chilton travelled 3.3 times around the world in his quest to visit, photograph and measure each bird, in each location, as well as investigating their nesting grounds. He is a natural writer and makes you feel like you are right there along with him and the crazy situations & people he encounters along the way.

As for the curse....you'll have to read it for yourself. Even though the \$10,000 reward

for directing him to any Labrador Duck, as yet unseen and documented in this book, has expired (Sept. 2010). You may still want to check Granny's stuffed duck on your mantelpiece at the cottage.

If you are looking for a great Christmas Gift idea for a bird loving Grindstoner this would be the perfect book for them.





### **OCTOBER 28TH STORM .....**

This graph shows how the water level in the north basin (bottom red line) went down and how high it went at Victoria Beach (top blue line). Because of strong winds, at times gusting up to 110 km/h, water was pushed from the north basin into the smaller south basin. The middle line represents the lake level that day (715.1 feet above sea level) minus the wind effect.

(Montreal Point is at the north end of the lake.)

### **IMPORTANT PHONE NUMBERS:**

Manitoba Conservation

- Riverton - 378-2261 Hecla - 279-2369

RCMP - Arborg - 376-5251

Arborg Hospital - 376-5247

Gimli Hospital - 642-5116

Ambulance - 911

Health Links - 788-8200 (Wpg.)

-No charge number 1-888-315-9257

Conservation Tip Line 1-800-782-0076

Emergency Joint Rescue Co-ordination Centre:

1 - 800-267-7270

VHF distress call - VHF channel 16

Cell phones (on some phones) - \*16 or #16

Don Bridges (Harbour master) - 378-5719

or 378-2999

RCMP— Arborg - 376-5251

Jim and Beulah Bake, - 378-5653

- Coast Guard Auxiliary

Mike Eastman - L. G'stone Harbour - 378-5621

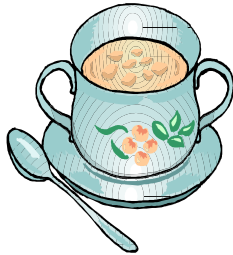
Rob Ediger - L. G'stone Harbour - 378-2637

# GRINDSTONE GOURMET

## Grindstone Potato & Bacon Soup

1 pound smoked bacon, chopped  
 2 stalks celery, diced  
 1 onion, chopped  
 3 cloves garlic, minced  
 8 potatoes, peeled and cubed  
 4 cups chicken stock  
 3 tablespoons butter  
 1/4 cup all-purpose flour  
 1 cup heavy cream  
 1/2 bottle Lager Beer  
 1 teaspoon dried tarragon  
 salt and pepper to taste

In a Dutch oven, cook the bacon over medium heat until done. Remove bacon from pan, and set aside. Drain off all but 1/4 cup of the bacon grease.



In the bacon grease remaining in the pan, sauté the celery and onion until onion begins to turn clear. Add the garlic, and continue cooking for 1 to 2 minutes. Add the cubed potatoes, and toss to coat. Sauté for 3 to 4 minutes. Return the bacon to the pan, and add enough chicken stock to just cover the potatoes. Cover, and simmer until potatoes are tender.

In a separate pan, melt the butter over medium heat. Whisk in the flour. Cook stirring constantly, for 1 to 2 minutes. Whisk in the heavy cream, beer, and tarragon. Bring the cream mixture to a boil, and cook, stirring constantly, until thickened.

Stir the cream mixture into the potato mixture. Adjust seasonings to taste.

Optional ingredients:

Red & green bell pepper diced  
 ham bone (remove before serving!)  
 Cheddar Cheese  
 Chives or green onions to garnish  
 Sour cream  
 Red chard or Swiss chard (add just as you're adding the cream mix)

## Cilantro Lime Marinade

4 tbsp finely chopped cilantro  
 2 tbsp honey  
 2 cloves garlic  
 zest of 1 lime, juice from 2  
 salt and pepper  
 bottle of Pale Ale

Process ingredients in a blender or chop up finely then pour it all over 8 chicken breasts and marinate it for 2 hours or so. Preheat your Barbeque Grill, brush with some olive oil, then put the chicken on to grill. While it is cooking, take the reserved marinade and boil it for a couple of minutes to sterilize it, then use the liquid to baste the chicken while grilling.

